



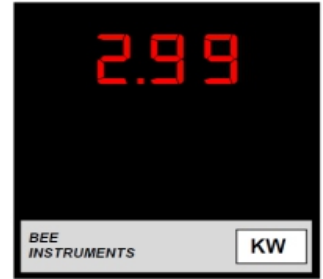
RDMLW457214



RDMLV457214



RDMLV459696
RDMLV451414



RDMLW459696
RDMLW451414

Specifications

- # **Measuring Method** Multiplication of pulse Width and pulse Height
- # **Sampling Rate** 2.5 Samples per Second
- # **Display Type** Red,7Segment LED super Bright Display
- # **Resolution** 0.001 to 1 Depending on Range for 3½ digit
0.0001 to 1 depending on range for 4½ digit
- # **Maximum Overload** Voltage: 1.2 times continuous
Current: 2 times continuous
- # **VA Burden(Typical)** Auxiliary:< 5 VA
Voltage Input:< 0.5 VA,< 5 VA for R Phase in self Powered
Current Input: < 0.5VA /Phase
- # **Environment** Calibration:27°C ± 5°C,
Operation: 0 to 55°C,RH < 70%
Storage: -10 to 60°C, RH < 70%
- # **Over Range** " 1 " or "-1"

- # **Dielectric Strength** 2.5 kV at 50Hz for 1 min. between Case - Terminals
- # **polarity Indication** " _ " is Displayed to indicate Export of power
- # **Case / Housing Material** DIN Black ABS, Dimension as per DIN 43700
- # **Mounting Clamps** Sturdy, Moulded ABS with Hardware
- # **Connectors** Terminal Block of thermoplastic(UL 94V-0) with Tin plated Brass Terminals
- # **Faceplate / Lens** Red antiglare Faceplate with annunciators
- # **DisplayStability** Within ± 2 Digits

Model	input(Nominal) A=1,2 or 5A AC PF 0.2 Lag-1-0.2 Lead Hz=50Hz		Auxiliary power supply (any one only)			Accuracy class		Digits (max)		bi directional		Display Digit Height		
			110/ 230V AC	24/48/ 110/220V DC	Self Powered	0.5	1	3½	4½	Input	Display	0.56"/ 14.2mm	1.0"/ 25.4mm	
RDMLW359696X RDMLV359696X	1P 1E 2W	V Range = ± 20% of Nominal; A Range = 20 - 120% of Nominal	For 1P1E2W : 63.5 / 230V (P-N); For 3P 1E 2W: 110 / 440V (P-P); For 3P2E3W / 3P3E4W: 110 / 440V (P-P)	✓	✓	✓	✓	✓	✓	✓	✓	✓		
RDMLW459696X RDMLV459696X				✓	✓	✓	✓	✓		✓	✓	✓	✓	
RDMLW35969631X RDMLV35969631X	3P 1E 2W (Balanced load)			✓	✓	✓	✓	✓		✓	✓	✓	✓	
RDMLW45969631X RDMLV45969631X				✓	✓	✓	✓	✓		✓	✓	✓	✓	
RDMLW35969632X RDMLV35969632X	3P 1E 2W (Balanced& Unbalanced load)			✓	✓	✓	✓	✓		✓	✓	✓	✓	
RDMLW45969632X RDMLV45969632X				✓	✓	✓	✓	✓		✓	✓	✓	✓	
RDMLW35969633X RDMLV35969633X	3P 1E 2W (Balanced& Unbalanced load)			✓	✓	✓	✓	✓		✓	✓	✓	✓	
RDMLW45969633X RDMLV45969633X				✓	✓	✓	✓	✓		✓	✓	✓	✓	
RDMLW451414X RDMLV451414X	1P 1E 2W			✓	✓	✓	✓	✓		✓	✓	✓	✓	✓
RDMLW45141431X RDMLV45141431X	3P 1E 2W (BalancedLoad)			✓	✓	✓	✓	✓		✓	✓	✓	✓	✓
RDMLW45141432X RDMLV45141432X				✓	✓	✓	✓	✓		✓	✓	✓	✓	✓
RDMLW45141433X RDMLV45141433X	3P 1E 2W (Bal. & Unbal.Load)			✓	✓	✓	✓	✓		✓	✓	✓	✓	✓
RDMLW457214X RDMLV457214X	1P 1E 2W			✓	✓	✓	✓	✓		✓	✓	✓	✓	✓
RDMLW45721431X RDMLV45721431X	3P 1E 2W (BalancedLoad)			✓	✓	✓	✓	✓		✓	✓	✓	✓	✓
RDMLW45721432X RDMLV45721432X	3P 1E 2W (Bal&Unbal.Load)			✓	✓	✓	✓	✓		✓	✓	✓	✓	✓
RDMLW45721433X RDMLV45721433X	3P 1E 2W (Bal&Unbal.Load)			✓	✓	✓	✓	✓		✓	✓	✓	✓	✓

Dimensions(mm)			
Model	RDMLW359696X / RDMLW459696X RDMLV359696X / RDMLV459696X	RDMLW457214X RDMLV457214X	RDMLW451414X RDMLV451414X
Front	96×96	72×144	144×144
Depth (Behind Bezel)	135	130	59
Panel Cut - Out	92(+0.5,-0.0)×92(+0.8,-0.0)	68(+0.8, -0.0)×138(+0.8,-0.0)	138(+0.5,-0.0)×138(+0.8,-0.0)

Ordering Information : Model, Input Voltage, Input Current, Input Frequency, CTR / PTR , Scale Display, Auxiliary Supply, Accuracy Class, Digits, Uni or Bi Directional Input & Display Digit Height

Terminal Connection

